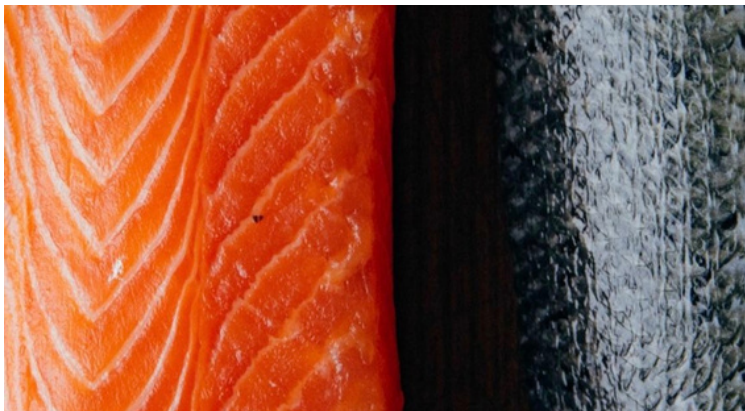


January 6 thru January 19, 2024



#24956 \$9.52 lb

SALMON FILLET, VERLASSO 3-4LB SCO, PBO, FRM , CHILE

ABOUT VERLASSO

Verlasso has been a leader in sustainable practices for nearly a decade. We work closely with our local communities to reduce environmental impact with proven innovative sustainable farming techniques. Verlasso is on the cutting edge of harmonious aquaculture and is a truly trusted source for delicious quality salmon.

WHY VERLASSO?

Nourished by the earth's richest current, the Humboldt, Verlasso salmon is the ultra-premium brand of AquaChile. We achieve our level of quality, flavor, and sustainability because we care about everyone and everything that touches your salmon.

WE GO TO GREAT LENGTHS TO CAREFULLY CHOOSE EACH FARM SITE, ENSURING THAT OUR SALMON IS RAISED IN ONLY THE CLEANEST WATERS.

Remote Location

At 42° south, far from cities, villages and industrial pollutants, we found ideal growing conditions that yield the freshest and healthiest salmon.

The Humboldt Current

Cold, low salinity water flows up from deep ocean trenches, refreshing the farms all year long. Our fish thrive in waters uniquely primed with micro-nutrients and planktons.

SUSTAINABILITY AT SCALE

As a leader in sustainable farming practices, Verlasso consistently meets growing demand while raising the highest quality salmon. Our commitment to leadership extends beyond sustainable farming to include consistent harvesting, processing, and delivery, making Verlasso one of the only producers that reliably delivers at scale.

Fish in Fish out

Hormone and Antibiotic Free



#21302. \$20.36lb

SCALLOPS, 10-20 DRY 1X10LB WILD USA

BACON WRAPPED SCALLOPS

- 6 slices bacon
- 12 sea scallops, rinsed and drained
- 3 tablespoons fresh lemon juice

Directions

1. Preheat oven to 350 degrees F (175 degrees C).
2. Cut the bacon slices in half and wrap each half around a scallop. Use a toothpick to secure in place.
3. Drizzle lemon juice over scallops. Place on a cookie sheet.
4. Bake in a preheated oven for 15 to 20 minutes or until bacon is cooked.
5. Serve warm.



SEABASS

02600 BASS CHILEAN SEA FLT
18644 BASS CHILEAN SEA S/B FLT PORTIONS
02572 BASS CHILIAN SEA S/B FLT
21792 BASS STRIPED PACIFICO S/O PBO
02558 BASS WHT WHL

BRONZINI

02567 BRONZINI WHL SCALED GUTTED
13726 BRONZINO HEAD ON BONED

CATFISH

02562 CATFISH FLT FARMED USA

CALAMARI

14052 CALAMARI RINGS & TENTICLES 10# AVG

CLAMS

02582 CLAMS CHERRYSTONE
02578 CLAMS LITTLE NECK FARMED
02579 CLAMS LITTLE NECK W/B
02577 CLAMS MIDDLE NECK FARMED
02580 CLAMS MIDDLE NECK W/B
07053 CLAMS MIDDLE NECK WILD
14060 CLAMS STEAMER WILD USA
02576 CLAMS TOP NECK WILD

COD

07064 COD FLT WILD ALASKAN
16781 COD LOIN S/B ICELAND ATLANTIC

CRABMEAT

02590 CRABMEAT CLAW 16 OZ
007907 CRABMEAT BACKFIN
02590 CRABMEAT CLAW
02589 CRABMEAT LUMP
02574 CRABMEAT LUMP JUMBO
02564 CRABMEAT SPECIAL

FLUKE

07243 FLUKE FLT LRG SKNLS

GROUPER

07214 GROUPER RED FLT S/O USA GULF WILD
19092 GROUPER RED HEAD ON SCALED

HADDOCK

16376 HADDOCK FLT SKIN ON ICELAND

HALIBUT

07735 HALIBUT DRSD WILD
08900 HALIBUT DRSD WILD 10-20 CAN
02588 HALIBUT FLT
14387 HALIBUT FLT SKINLESS
12750 HALIBUT PORTIONS S/B

LOBSTER

02597 LOBSTER LIVE 1.25#
08116 LOBSTER LIVE 1.5# CAN

MAHI MAHI

02554 MAHI MAHI FLT
06880 MAHI MAHI FLT SKLS USA
10028 MAHI MAHI PORTION

MONKFISH

02555 MONKFISH FLT

WALLEYE

07976 WALLEYE FLT MED
16920 WALLEYE MED V-CUT

MUSSELS

21689 MUSSELS BANGS ISLAND
02569 MUSSELS PEI
02568 MUSSELS PEI

OYSTERS

021459 OYSTER MURDER POINT
14800 OYSTERS BEVANS
08940 OYSTERS DELAWARE BAY 100CT
02565 OYSTERS SEL SHUCKED
21982 OYSTERS WELLFLEET
07671 OYSTERS WILD DELAWARE BAY

PERCH

07583 PERCH FLT OCEAN WILD
06524 PERCH FLT YELLOW LAKE

PICKEREL

02593 PICKEREL/WALLEYE FLT JUMBO

SALMON

21793 SALMON ARCTIC KVAROY 4-5# S/O PBO
02559 SALMON FLT 2-3# ATL CHILE
02586 SALMON FLT 3-4# ATL CHILE
02560 SALMON FLT 3-4# CANADA
06519 SALMON FLT 3-4# S/B E TRIM ATL
10017 SALMON FLT FAROE ISLAND
07280 SALMON FLT KING NEW ZEALAND
07365 SALMON FLT S/O SCOTTISH
14137 SALMON PORTION C/C S/B CHILEAN
12909 SALMON SMKD SLICED NORWAY
10422 SALMON TRIM
17195 SALMON WHL 10-12# ATL CANADA
18417 SALMON WHOLE 12-14# FARM CANADA

SCALLOP

21302 SCALLOP 10/20 DRY PACK 10# AVG
16632 SCALLOP SEA U/10CT FLAT
17030 SCALLOP SEA U/15CT WILD USA
21302 SCALLOP USA 10/20 DRY WILD
17052 SCALLOP USA U/8 DRY WILD
07773 SCALLOPS JAPANESE U/10 CT

SNAPPER

12573 SNAPPER B-LINER SCALED USA
14162 SNAPPER FLT GULF WILD CAUGHT
19270 SNAPPER RED WHOLE 2-4# CLEANED
19352 SNAPPER WHOLE LANE

SOLE

02556 SOLE FLT 4-6OZ
07674 SOLE FLT 4-6OZ HYGRADE

SWORDFISH

02553 SWORDFISH LOIN C/C USA
10025 SWORDFISH LOIN WILD
07366 SWORDFISH STEAK PORTIONS

TILAPIA

02575 TILAPIA FLT 5-7OZ

TROUT

10656 TROUT FLT LOCHETIVE SK/ON F.R.SC
21480 TROUT RAINBOW REVERENCE SINGLE FLT
07734 TROUT RUBY FLT USA FARM

TUNA

10026 TUNA AHI C/C #1 YELLOWFIN
10455 TUNA STEAK AHI 8OZ IQF
02563 TUNA YELLOWFIN PORTIONS PHILIPPINES